

How to Book?

1. Choose your preferred tour package.

2. Make your reservation

 **KTourStory**
+82-2-2038-0840
www.ktourstory.com



3. On the day of your tour, please arrive at the meeting point at least 10 minutes before departure.

Notice

1. We recommend booking at least 3 days in advance.

2. The tour fee includes admission to all attractions.

3. Korean nationals may join the tour only when accompanied by foreign guests.

4. No minimum number of participants is required.



Discover
the authentic spirit
of Korea
in Gyeonggi-do!

2025

EASY TO ENJOY!

EG Tour

English



What is EG Tour?

EG Tour

EG Tour is a convenient, foreigner-only program that starts from Seoul and takes you to a variety of must-see destinations across Gyeonggi-do.

Every tour includes a professional guide, and you can explore your favorite destinations at an affordable price.

Make lasting memories in Korea through EG Tour in Gyeonggi-do—where diverse experiences and stunning landscapes await you!

Where is Gyeonggi-do?

Located just outside Seoul, it's a region where stunning nature, rich history, and vibrant modern attractions blend seamlessly.



2025 EG Tour Courses



A course

"Step Back in Time - Walk Through Korea's Traditions"

Major place Suwon Hwaseong Fortress
₩ \$64 Day of Operation Wed, Sat Operating Hours 08:20-19:20



01 Korean Folk Village

The Korean Folk Village is a popular destination for both local and international visitors seeking an immersive experience of traditional Korean culture and history, featuring restored Joseon-era houses, seasonal customs, and traditional crafts.



02 Suwon Hwaseong Fortress

Suwon Hwaseong is a UNESCO World Heritage site built in the late 18th century by King Jeongjo. With its harmonious blend of military strategy and graceful architecture, the fortress reflects the vision and values of the Joseon dynasty.



03 Suwon Nammun Market

Suwon Nammun Market, with a history dating back to the Joseon Dynasty, is one of the largest and oldest traditional markets in Korea, offering a rich cultural experience through its vibrant atmosphere and diverse local goods.



B course

"A Relaxing Day of Flowers, Fruit, and Art"

Major place Pocheon Art Valley
₩ \$76 Day of Operation Thu, Sun Operating Hours 08:20-19:30



01 The Garden of Morning Calm

The Garden of Morning Calm is a botanical garden near Chukryeongsan Mountain, set against a breathtaking backdrop, featuring meticulously designed gardens that highlight the beauty of Korean flora through expert landscaping.



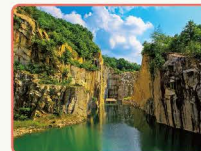
02 Farm Experience

: Fruit Picking (Apple/Strawberry)
Walk through scenic orchards and enjoy picking fresh Korean strawberries or apples by hand. It's a fun and memorable way to experience the charm of Korea's countryside.



03 Pocheon Art Valley

Take a peaceful stroll through Pocheon Art Valley and enjoy the tranquility of this scenic park. Surrounded by majestic cliffs and a crystal-clear lake, it offers visitors a perfect opportunity to unwind and appreciate the natural beauty.



Major place Icheon Ceramics Village
₩ \$77 Day of Operation Tue, Fri Operating Hours 07:20-19:20



01 Yeongneung (Sejong the Great's Tomb)

A UNESCO World Heritage site, Yeongneung is the tomb of King Sejong the Great and his queen, Soheon. It commemorates his remarkable legacy, including the creation of Hangeul, the Korean alphabet, in a tranquil and historically significant setting.



02 Traditional Korean Meal featuring Icheon Rice (Lunch)

Delicious dishes made with premium Icheon rice, known for its rich flavor and perfect texture.



03 Icheon Ceramics Village (Mug-Making Experience)

Craft your own ceramic mug with guidance from skilled artisans and learn about traditional Korean pottery. Explore Icheon Ceramics Village, home to galleries and kilns, and take home a unique keepsake of your experience.



04 Namhansanseong Fortress

A UNESCO World Heritage site, Namhansanseong is a 17th-century mountain fortress that once served as an emergency capital of the Joseon Dynasty. Surrounded by forested trails and sweeping views, it offers a rich blend of history, nature, and resilience.



Major place Camp Greaves
₩ \$69 Day of Operation Tue, Thu Operating Hours 07:50-18:00



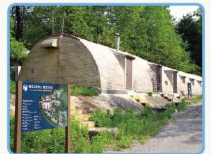
01 Imjingak (Imjingak Park)

Located near the Demilitarized Zone (DMZ), Imjingak is a symbolic site of Korean division and hope for reunification. Visitors can explore monuments, the Freedom Bridge, and a peaceful park that tells the story of Korea's modern history.



02 Peace Gondola & Camp Greaves

Ride the Peace Gondola for panoramic views of Korea's divided history. Then step into the past at Camp Greaves, a former U.S. military base near the DMZ, and experience the Korean War era through immersive exhibits.



03 DMZ Peace Tour

Unlike typical DMZ tours, the DMZ Peace Tour offers a deeper glimpse into Korea's division and hopes for reunification. Visit Dora Observatory, Third Tunnel of Aggression, and Tongilchon Village—key sites near the border that tell a story of conflict and peace.



“Peaceful Views, Traditional Flavors - A Day of Korean Calm”

📍 Major place Aegibong Peace Ecopark

🎫 \$70 📅 Day of Operation Mon, Thu 🕒 Operating Hours 07:50–18:40



01 Aegibong Peace Ecopark

Aegibong Peace Ecopark features an exhibition center themed around peace, ecology, and the future, along with an observatory offering one of the closest views of North Korea—where nature and history meet on the border of hope.



02 Gochujang Making Program (Lunch)

Experience Korea's culinary heritage through a hands-on gochujang (red chili paste) making program. Then enjoy a bibimbap lunch—perfectly paired with the flavors of your freshly made gochujang.



03 Hyundai Premium Outlet Gimpo

Hyundai Premium Outlet Gimpo is a premium shopping destination featuring a wide range of global and local brands in a stylish, open-air setting. Located near the Han River, it offers visitors a relaxing atmosphere with diverse options for shopping, dining, and leisure.



04 Hanok Village

Discover a peaceful village where hanok, traditional Korean houses, blend harmoniously with modern culture. Stroll along quiet lanes, explore artisan shops, and experience the timeless charm of Korea's heritage in an urban oasis.



“Riding the West Sea Breeze - A Day at Trendy Spots”

📍 Major place Tando Port & Seohae-Rang Cable Car

🎫 \$65 📅 Day of Operation Wed, Fri 🕒 Operating Hours 07:20–18:00



01 Tando Port & Seohae-Rang Cable Car

Experience breathtaking coastal views as you ride the Seohae-Rang Cable Car, connecting the picturesque Tando Port with stunning landscapes, offering a unique opportunity to enjoy both the beauty of the sea and the sky.



02 Suwon Starfield

Suwon Starfield is a dynamic complex offering shopping, dining, and entertainment options, highlighted by the impressive Starfield Library, a spacious and tranquil space for book enthusiasts. It's an ideal destination for relaxation and enjoyment.



03 Gwangmyeong Cave

Gwangmyeong Cave, the largest themed cave park in Korea, was created in a former gold mine where gold, silver, and bronze were once extracted. Explore its rich history, stunning art installations, and unique cultural experiences in this extraordinary underground space.



EG Tour PICK-UP Points

1-1. Exit 3, Hongik Univ. Station (D, E, F course)

Exit 3, Hongik Univ. Station (Line 2, Airport Railroad) in front of Olive Young



1-2. Exit 4, Hongik Univ. Station (A, B, C course)

Exit 4, Hongik Univ. Station (Line 2, Airport Railroad) in front of AK Plaza



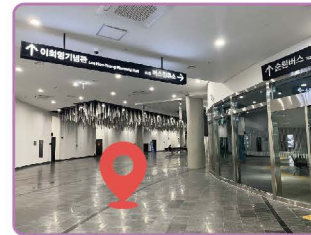
2. Exit 10, Dongdaemun History & Culture Park (DDP) Station

Exit 10, Dongdaemun History & Culture Park (DDP) Station next to apM place



3. Namsan Yejang Public Parking Lot

Exit 1, Myeong-dong Station (Line 4) 5min on foot



Tour Info & Help



KTourStory

[Contact Information]

Operating Hours : 07:30 ~ 22:30

Tel : +82-2-2038-0840

E-mail : ktourstory@gmail.com

H.P : www.ktourstory.com