

D4 01.Samsung Innovation Museum Suwon
The Samsung Innovation Museum (S/I/M), which opened on April 21, 2014, during Science Day, is the largest electronics industry history museum in Korea and a public relations center for Samsung Electronics.

C3 02.HYUNDAI MOTORSTUDIO GOYANG Goyang
Hyundai Motorstudio Goyang is the largest experiential automotive theme park in South Korea. Combining 'Motor', which means automobile, and 'Studio', where a new culture is created, it offers a new experience of automobiles that have become a companion in our lives beyond a simple means of transportation.

D2 03.Lighting Museum Yangju
The KH Feelux Lighting Museum, established by Feelux, is the only museum specializing in lighting in Korea, and presents exhibitions with themes and materials of light, color, and lighting.

D4 04.Samsung Fire & Marine Insurance Mobility Museum Yongin
Experience fun mobility attractions and admire beautiful classic cars that blend into the space. It is a multicultural space where you can also relax in the lush greenery.

D2 05.Amazing Park Pocheon
Amazing Parkfor Science-Loving Kids. Check out the things you've always dreamed of at Amazing Park! When children understand the principles of science through experience, their curiosity becomes a joy.

D5 06.Gyeonggi Pyeongtaek Port Corporation Pyeongtaek
Gyeonggi Pyeongtaek Port Corporation strives to revitalize the local and national economy by promoting port infrastructure development and actively pursuing marketing strategies.

E4 07.Simmons Terrace Icheon
Simmons Terrace is a complex cultural space and ESG center for local residents in Icheon. It features a brand museum 'Heritage Alley', technology experience space 'Mattress Lab', BEAUTYREST black showroom 'Hotel', and F&B, as well as social art exhibitions, farmers markets, illuminations, and more.

Food Manufacturing-Processing

D2 08.Seoul Dairy Cooperative Yangju
Seoul Dairy Cooperative is a representative dairy company in Korea that has been firmly maintaining its No. 1 position in the dairy industry through ceaseless innovation and effort solely to improve milk quality.

D5 09.hy Factory+ Pyeongtaek
Yakult, a fermented beverage everyone is familiar with! How is Yakult made and how does it come to us? We provide a wide range of information, including production processes from product production to packaging, hygiene management, and production, in a fun and easy-to-understand way for everyone, regardless of age or gender.

D5 10.Hankyong Farm & Bio Anseong
Hankyong Farm & Bio produces eco-friendly agricultural products, and operates the food processing plants that make traditional Korean sweets and sauces made with local specialties.

E5 11.Masil Icheon
Located in Icheon, Gyeonggi-do, the hometown of rice, Masil is a quality certified company for rural convergence industries and educational farms, as well as a cultural space where you can experience various types of educational programs.

D3 12.Farm Art Holic Namyangju
Farm Art Holic began with the idea that agriculture can also become art by improving the level of perfection. We provide educational consulting by developing an agricultural business model based on convergence of agriculture and industry.

C2 13.Paju Jangdan Unification Village Paju
Jangdankong Village is an agricultural cooperative formed by villagers with the desire to protect Korean soybeans and agricultural products and to share it with many people to improve the supply of Korean beans.

D1 14.Sanmeoru Farm Paju
Sanmeoru Farm is the only winery located in the Seoul metropolitan area, and it produces wine using sanmeoru, Korean wild grapes. Here you can participate in various programs including 'My wine' where you can pour wine in the bottle yourself.

E4 15.Genesis BBQ Chicken University Icheon
It is an experience place where you can make and enjoy the signature menu, Golden Olive Chicken, at Chicken University established by Genesis BBQ Group, the No. 1 fried chicken franchise company in Korea.

D2 16.Jangdan Kong Saimdang Tofu Street Paju
Our cooperative sells Saimdang tofu made with Jangdan beans, which are produced only in autumn in Paju, well known for its four distinct seasons and clean environment.

E2 17.Green Food Gapyeong
Green Food focuses on fostering and supporting agricultural and fishery businesses and distributing, processing and selling products. Delivering the best value with healthy and reliable ingredients, we also run cooking classes using eco-friendly ingredients produced in the Gapyeong region.

D3 18.Tree to Bar Namyangju
We visit cacao farms around the world, taste cacao beans, communicate with producers, and thoroughly check the quality control of cacao. We manufacture our products with cocoa imported through fair direct trade, researching and producing everything from beans to chocolate.

D5 19.Farm8 Pyeongtaek
Salad vegetables are grown in smart farms that incorporate ICT technology (Vertical Farm, 100,000 sqft., operated by Plant T Farm, a subsidiary), processed into fresh cut lettuce and 70,000 packs of lettuce are distributed to the domestic market a day.

C2 20.Rice Flowers Farmer Gimpo
We have been cultivating the best Gimpo rice with blooming rice flowers for three generations, and now we dream of a sustainable agricultural future. We research and sell processed foods containing rice grown in a clean rural environment near the Civilian Control Line in Gimpo, and also run rural experience programs.

D4 21.Moon Food Anyang
Moon Food is a preliminary social enterprise that manufactures HACCP-certified handmade Choco Pies. We provide premium-grade handmade choco pies that are relatively less sweet and contain healthy, fresh, natural flavors with no fragrance and no preservatives.

D3 22.Riceclay Guri
Riceclay develops simple cooking play kits such as 'Let's play with rice' using rice and coconut that combines play and cooking. Instructions and online videos are provided so that anyone can easily make rice cakes and cookies using rice dough made with Rice Clay's exclusive patented technology.

D2 23.Ilkkyung Farm Pocheon
Ilkkyung Farm is a GAP-certified strawberry farm in a fresh environment equipped with hydroponic beds. You can use fresh strawberries to make jam, whipped cream cake, jelly, rice cake, mochi and many others and take various cooking programs.

Brewery

E4 24.Sulseam Yangin
Inheriting the wisdom of our ancestors contained in ancient literature, Sulseam produces traditional liquors and fermented vinegars with sincerity and nature in high-quality ingredients. You can tour the inside of the brewery, taste traditional liquors (about 1 hour), and take a makegollim making class (about 2 hours).

D5 25.Joensuu Pyeongtaek
We began with a piece of an old memory about the traditional five-way fermentation method. Putting together the fragments of memories, we make good rice wine made with all our heart.

E2 26.Sansowul Pocheon
Sansowul, which is full of the elegance and sensibility of traditional Korean liquors, was officially opened in October 2009 with the meaning of a garden of Hawthorn trees, which is the raw material for Sansowul, the representative alcoholic beverage of Bae & Brewing.

E5 27.MyoungJuGa Icheon
MyoungJuGa is one of the traditional liquor educational institutions selected by the Ministry of Food, Agriculture, Forestry and Fisheries, and is committed to research and development of Korean traditional liquor and fermentation. There is a learning center where you can make your own makegollim and an exhibition hall introducing local foods.

E4 28.Soolawon Yeouju
Soolawon is a traditional liquor brewery that researches and restores and manufactures Korean alcohol in ancient documents. Using only Korean crops without any sweeteners, we make a variety of traditional liquors that suit the taste of modern people. We also run various programs for experiences, tours, and tastings.

D1 29.Yeoncheon Brewery & Distillery Yeoncheon
A traditional liquor brewery that produces rice wine and spirits from the clear water flowing from the north and yulmu grown in the fertile land to the south of Yeoncheon, the first place where humankind lived on the Korean Peninsula. The brewery offers a traditional liquor five-sense experience with local food and a yulmu healing farming program.

E3 30.THREE SOCIETIES DISTILLERY Namyangju
Three Societies is Korea's first single malt whisky distillery. They produce Ki One single malt whisky and Jung One a single malt gin. You can experience how whisky is hand-crafted in Korea and how the local four seasons affect the maturation of Korean whisky in oak casks.

D4 31.Fundamental Brewing Suwon
Fundamental Brewing is a brewery established in Suwon, Gyeonggi-do in 2018 to make beer that is faithful to the basics and essence (FUNDAMENTAL) and always delights customers with new attempts and surprises (FUN DA MENTAL). It produces not only basic lines such as pilsner, stout, and IPA, but also new and interesting beers such as white stout, milk IPA, salted caramel ale, and barrel series, and also brewery tours are available.

E3 32.Beber Brewery Gwangju
Beber Brewery is a brewery that makes beer under the slogan Brewed by Heart, which implies that a brewer who studied beer brewing in Berlin and gained experience in Spain and Germany brewed beer with passion. Beber Brewery won the Grand Prize for Soellung Pale Ale in 2021 at the Korea Liquor Awards, and won two Grand Prizes for Youngdong Gose and Via Golden Ale at the same competition in 2022. We make beers that incorporate culture in connection with traditional Korean folk paintings, Donghaemun Design Plaza, and Waterbomb.

K-Culture

C3 33.Korea Manhwa Museum Bucheon
The Korea Manhwa Museum promotes the history, culture, and artistic value of Korean manhwa. You can enjoy everything about Korean comics, from Korea's first comics in 1909 to webtoons that have grown into global contents.

C2 34.Book City Letterpress Museum Paju
The Book City Letter Press Museum, which has the largest number of types in the world with 22 tons, 22,000 types, and 38 million characters, is a historical site where the Jeil Type Factory, the last metal type foundry in Korea, is operating, and it is also a place where you can see the printing and bookmaking facilities that are actually in operation. Moreover, it is equipped with an optimal system that allows you to experience all four elements of a publishing culture powerhouse (papermaking, casting, writing, and printing) using metal types.

E5 35.Museum of Culinary Art Anseong
The Museum of Culinary Art consists of several exhibition halls categorized by theme and person, showing the history of Western cuisine in Korea from modern times to the present. It gives vision to young people who have a passion for cooking, gives pride to those working in the cooking industry, and provides the general public with an opportunity to step closer to the world of cooking.

Regeneration Industry

C3 36.Bucheon Art Bunker B39 Bucheon
Bucheon Art Bunker B39 is a complex cultural space that has been transformed into a space that contains technology, humanity, culture, and art by reconstructing the connection and process of machines that used to burn and dispose of garbage and the landscape and movement of people who handled it into an art space. As a hub for international exchange, it is a place where digital media art, music, pop culture and contemporary art, technology and creativity come together. It is a place where everyone can enjoy new contemporary art, and a place where experts from various fields of culture, art, education, and economy create values while meeting and exchanging with new contents and methods, and a cultural resting place open to anyone.

D3 37.Gwangmyeong Cave Gwangmyeong
Gwangmyeong Cave, located in Gwangmyeong-si, Gyeonggi-do, is the only cave in Korea where you can access the cave near the city center, and it is one of the most popular tourist destinations in Korea, attracting more than 1 million visitors annually. Gwangmyeong Cave, which had been used as a salted shrimp warehouse for 40 years since the mine was closed in 1972, was purchased by Gwangmyeong City in 2011 and transformed into a historical and cultural tourist attraction.

D3 38.Guri Resource Recovery Facility & Guri Tower Guri
Guri Resource Recovery Facility & Guri Tower were built for pollution-free living environment and environmental preservation, energy saving and resource recycling. Guri Resource Recovery Facility is a waste treatment facility that can incinerate up to 200 tons of household waste generated in Guri city a day, and the Guri Tower, the chimney of the incinerator, is a tourist attraction in Guri.

Craft Industry

E4 39.Baekam Pottery Yongin
Baekam Pottery is a company run by a master craftsman, where you can experience pottery, and anyone, regardless of age, can visit and participate. In addition to one-day workshops, the workshop annual membership programs are offered, and there is always something to see in the gallery.

E4 40.Pyeongkang Ceramic Icheon
It offers various experience programs such as making pottery on a spinning wheel, drawing pictures on bisque fired pieces, making pottery by feeling clay with your hands, and painting pottery with markers.

E4 41.Gyeonggi Ceramic Museum Gwangju
Gyeonggi Ceramic Museum is a ceramics museum located in Gwangju, Gyeonggi-do, the hometown of official ceramics, which produced ceramics for the royal family for 500 years during the Joseon Dynasty. It was established to collect, preserve, research, and display tangible and intangible materials related to Korean celadon and white porcelain, as well as modern and contemporary ceramics. In addition, various educational experience programs are being offered to the public to enhance the understanding of the history and tradition of ceramics.

E4 42.Jungdoga Icheon
Jungdoga is Korea's largest Icheon pottery workshop for hands-on experience, recognized for the beauty of its unique pottery glaze. You can make a bowl that tells your own unique story by applying glaze to a bowl made on a potter's wheel. It is located within the Icheon Ceramic Art Village (Yes Park), where groups of up to 200 people can take up a pottery making program.

C4 43.Glass Island Art Museum Ansan
The Daebudo Glass Island Art Museum consists of an exhibition hall that introduces the history of glass and glass sculptures, a theater-style glass craft demonstration hall, a glass craft experience hall, as well as Mac Art Gallery with contemporary art, glass sculpture park along the coastal road, art shops, restaurants, cafes and variety of convenience facilities such as a supermarket. Numerous works by famous glass craftsmen are collected and displayed to attract interest and entertain the visitors to the museum.

C2 44.Ecomakers Paju
Ecomakers strives to create a workplace with an environmentally virtuous cycle that improves environmental problems and also creates new jobs through upcycling using discarded wood. We work with many experts in various fields such as eco-friendly product manufacturing, upcycling education, and urban regeneration projects.

D5 45.Cypress Love Pyeongtaek
We developed and registered invention patents for cushion pillows and backrests made of cypress wood, and supply products to many popular tourist destinations nationwide. We also run a cypress healing experience center where visitors can try cypress massage boards, cypress pillows, and backrests.

Agricultural-Farm Experience

D1 46.Herb Island Pocheon
With the theme of living in the Mediterranean, the origin of herbs, we provide you with experiences that will satisfy your five senses through various things to see, enjoy, and eat using herbs. At the Herbal Healing Center, you can experience various detox programs using herbs you picked yourself, as well as food and cosmetics using herbs.

E4 47.Human Insect Yeouju
With small animals such as insects and reptiles, the Yeouju Insect Museum, operated by Human Insect, develops unique exhibitions and educational programs through a new approach that prioritizes emotional healing of children. By raising interest in and understanding of insects, it is establishing itself as a platform for insects to grow into a culture in our daily lives.

D1 48.Welovefarm Yeoncheon
Welovefarm, located in Yeoncheon-gun, a clean area of the Daegu area, is an authentic dairy farm where you can enjoy cows, milk and cheese, and neighboring dairy farmers have gathered to form the Aesim Garden Farming Association to provide agricultural education and experience programs, as well as dairy processing.

D5 49.Nonghyup ANSEONG FARMLAND Anseong
Anseong Farmland, the largest agricultural theme park in Korea and a ranch for fun experiences, is located an hour away from Seoul, where you can see the farm animals up close, enjoy watching performances, and experience feeding. It is a great place to take pictures in the scenery decorated with canola in spring, sunflowers in summer, and cosmos and pink muhly in autumn.

D1 50.Yeoncheon Saedunghi Village Yeoncheon
Welcome to Saedunghi Village, a green village for farm experience where agricultural resources and natural scenery are in harmony. Saedunghi Village produces high-quality agricultural products that consumers can trust and enjoy, and offers cooking classes using a variety of agricultural products and programs to experience rural culture.

E3 51.Ddunggdanji Village Yangpyeong
Ddunggdanji Village, located in Gangsang-myeon, Yangpyeong-gun, is a village certified for the 6th industry of growing and processing Jerusalem artichokes. Here, you can purchase processed foods made with Jerusalem artichokes, as well as regional specialties such as perilla oil and sesame oil. In addition, you can enjoy various experiences, educational programs, and field trips prepared for each season.

E5 52.Buraemi Village Icheon
Buraemi Village is a representative village in Gyeonggi-do for farm experience. Here, you can enjoy a variety of experience programs such as harvesting seasonal crops, natural dyeing hosted by dyeing masters, making steamed rice bread with Icheon rice, harvesting tangerines and Seobonghyang (Hallabong) from Jeju Island, and making chewy injelmoji using a rice cake mallet.

D2 53.Mengol Village Yangju
If you want to escape from the stress and frustration of everyday life, visit the nearby Mengol Village in Yangju. Here, you can experience the traditional fermented food made over a long period of time with locally grown produce and feel the beauty of slowness in your busy life.

D2 54.Chorok Village Yangju
Chorok Village is a village with various resources such as herb farms, calligraphy halls, and ecological parks. Various experiential activities and tourism based on nature are prepared so that tourists can enjoy both nature and traditions and have a great time.

D1 55.Gyodong Jangdokdae Village Pocheon
Gyodong Jangdokdae Village is a rural village in harmony with the beautiful natural scenery. The main tree in the village is mulberry, and the village produces, processes, and sells mulberry and silkworm to increase added value. In addition, it offers a variety of experiences and opportunities to enjoy various foods and cultures by preparing seasonal menus with pollution-free and local ingredients.

E3 56.Jilul Goraesil Farming Association Yangpyeong
The name of the village Goraesil comes from the fact that there are many fertile paddy fields that can be cultivated even in the most severe drought thanks to the deep ground water and several springs. It is a beautiful village where you can enjoy fun experience programs throughout the four seasons.

D5 57.Lifelong Usual Local Foods Gireum Experience Village Pyeongtaek
Gireum Experience Village is a farm where you can grow and experience fresh and safe agricultural products grown in nature. Here, you can find healthy and high-quality fruits and vegetables at an affordable price by harvesting directly from local farmers. In addition, through programs that introduce abundant agricultural products that teach children the cleanliness of nature and provide various experiences, children can enjoy nutritious and delicious food.

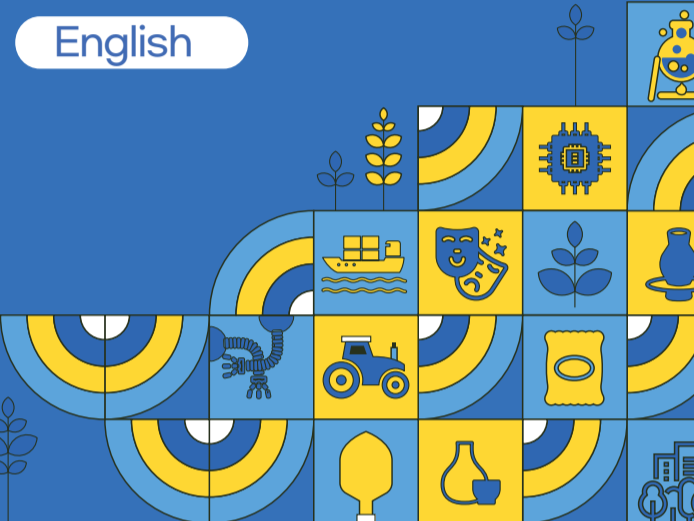
E4 58.Yongin Agricultural Theme Park Yongin
Yongin Agricultural Theme Park is a 10-ha agricultural and farm experience center surrounded by the beautiful nature of Gopdeung Pass and Yongdam Lake, contributing to the improvement of healthy leisure and culture by providing visitors with rest, recreation, and various experience programs.

E3 59.Sustainable Agricultural Museum of Yangpyeong Yangpyeong
The Sustainable Agricultural Museum of Yangpyeong is a public museum located in the Yongmunsan Tourist Complex in Yangpyeong-gun, comprising the Yangpyeong History Hall, where you can learn about Yangpyeong's culture and history, and the Sun's Art and Culture Hall, which introduces and promotes Yangpyeong's eco-friendly and sustainable agriculture. Annexed facilities include the Natural Cooking Research Institute and the Tea Ceremony Experience Center.

C4 60.Songsan Grape Farm Story Hwaseong
In a state-of-the-art farm with innovative greenhouse facilities and smart ICT, eco-friendly liquid fertilizer is produced from the sea breeze of the West Coast and good quality soil, and about 200 types of grapes are grown. A variety of educational and experiential programs are available.

2024 Gyeonggi-do Industrial Tourism Map

English



GYEONGGI-DO GYEONGGI TOURISM ORGANIZATION

Gyeonggi Recommended courses for industrial tourism

Northwest Industrial Tourism Course: Sanmeoru Farm, Lighting Museum, HYUNDAI MOTORSTUDIO GOYANG

Northeast Industrial Tourism Course: Seoul Dairy Cooperative, Herb Island, THREE SOCIETIES DISTILLERY

Southeast Industrial Tourism Course: Masil, Simmons Terrace, Gyeonggi Ceramic Museum

Southwest Industrial Tourism Course: Joensuu, hy Factory+, Glass Island Art Museum

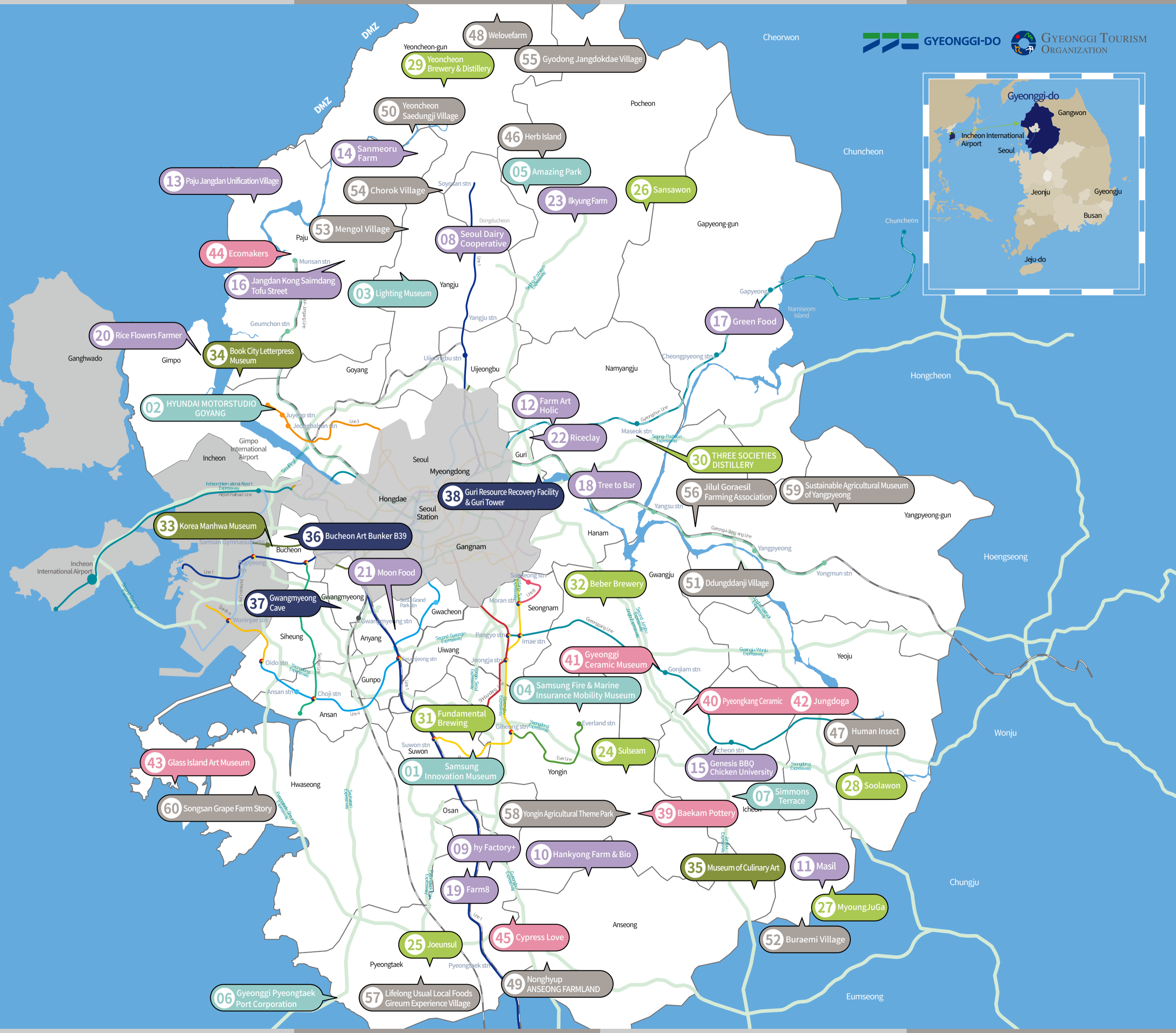
Capacity: More than 50 people, More than 100 people, More than 200 people, More than 3,000 people, More than 1000 people. Lists various course options and their capacities.

# Gyeonggi-do Industrial Tourism Map

Industrial tourism is a new tourism model that utilizes industrial resources, sites, and products of social and cultural value as tourism resources.



| No. | Technology-Science                              | location | No. | K-Culture  | location |
|-----|---|----------|-----|--|----------|
| 01  | Samsung Innovation Museum                       | D4       | 33  | Korea Manhwa Museum                                  | C3       |
| 02  | HYUNDAI MOTORSTUDIO GOYANG                      | C3       | 34  | Book City Letterpress Museum                         | C2       |
| 03  | Lighting Museum                                 | D2       | 35  | Museum of Culinary Art                               | E5       |
| 04  | Samsung Fire & Marine Insurance Mobility Museum | D4       |     |  |          |
| 05  | Amazing Park                                    | D2       |     |  |          |
| 06  | Gyeonggi Pyeongtaek Port Corporation            | D5       |     |  |          |
| 07  | Simmons Terrace                                 | E4       |     |  |          |
| No. | Food Manufacturing-Processing                   | location | No. | Regeneration Industry                                | location |
| 08  | Seoul Dairy Cooperative                         | D2       | 36  | Bucheon Art Bunker B39                               | C3       |
| 09  | hy Factory+                                     | D5       | 37  | Gwangmyeong Cave                                     | D3       |
| 10  | Hankyong Farm & Bio                             | D5       | 38  | Guri Resource Recovery Facility & Guri Tower         | D3       |
| 11  | Masil   | E5       |     |  |          |
| 12  | Farm Art Holic                                  | D3       |     |  |          |
| 13  | Paju Jangdan Unification Village                | C2       |     |  |          |
| 14  | Sanmeoru Farm                                   | D1       |     |  |          |
| 15  | Genesis BBQ Chicken University                  | E4       |     |  |          |
| 16  | Jangdan Kong Saimdang Tofu Street               | D2       |     |  |          |
| 17  | Green Food                                      | E2       |     |  |          |
| 18  | Tree to Bar                                     | D3       |     |  |          |
| 19  | Farm8   | D5       |     |  |          |
| 20  | Rice Flowers Farmer                             | C2       |     |  |          |
| 21  | Moon Food                                       | D4       |     |  |          |
| 22  | Riceclay  | D3       |     |  |          |
| 23  | Ilkyung Farm                                    | D2       |     |  |          |
| No. | Craft Industry                                  | location | No. | Agricultural-Farm Experience                         | location |
| 39  | Baekam Pottery                                  | E4       | 46  | Herb Island  | D1       |
| 40  | Pyeongkang Ceramic                              | E4       | 47  | Human Insect   | E4       |
| 41  | Gyeonggi Ceramic Museum                         | E4       | 48  | Welovefarm   | D1       |
| 42  | Jungdoga  | E4       | 49  | Nonghyup ANSEONG FARMLAND                            | D5       |
| 43  | Glass Island Art Museum                         | C4       | 50  | Yeoncheon Saedungji Village                          | D1       |
| 44  | Ecomakers                                       | C2       | 51  | Ddungddanji Village                                  | E3       |
| 45  | Cypress Love                                    | D5       | 52  | Buraemi Village                                      | E5       |
|     |   |          | 53  | Mengol Village                                       | D2       |
|     |   |          | 54  | Chorok Village                                       | D2       |
|     |   |          | 55  | Gyodong Jangdokdae Village                           | D1       |
|     |   |          | 56  | Jilul Goraesil Farming Association                   | E3       |
|     |   |          | 57  | Lifelong Usual Local Foods Gireum Experience Village | D5       |
|     |   |          | 58  | Yongin Agricultural Theme Park                       | E4       |
|     |   |          | 59  | Sustainable Agricultural Museum of Yangpyeong        | E3       |
|     |   |          | 60  | Songsan Grape Farm Story                             | C4       |
| No. | Brewery   | location |     |  |          |
| 24  | Sulseam   | E4       |     |  |          |
| 25  | Joeunsul  | D5       |     |  |          |
| 26  | Sansawon  | E2       |     |  |          |
| 27  | MyoungJuGa                                      | E5       |     |  |          |
| 28  | Soolawon  | E4       |     |  |          |
| 29  | Yeoncheon Brewery & Distillery                  | D1       |     |  |          |
| 30  | THREE SOCIETIES DISTILLERY                      | E3       |     |  |          |
| 31  | Fundamental Brewing                             | D4       |     |  |          |
| 32  | Beber Brewery                                   | E3       |     |  |          |



©2018 Location